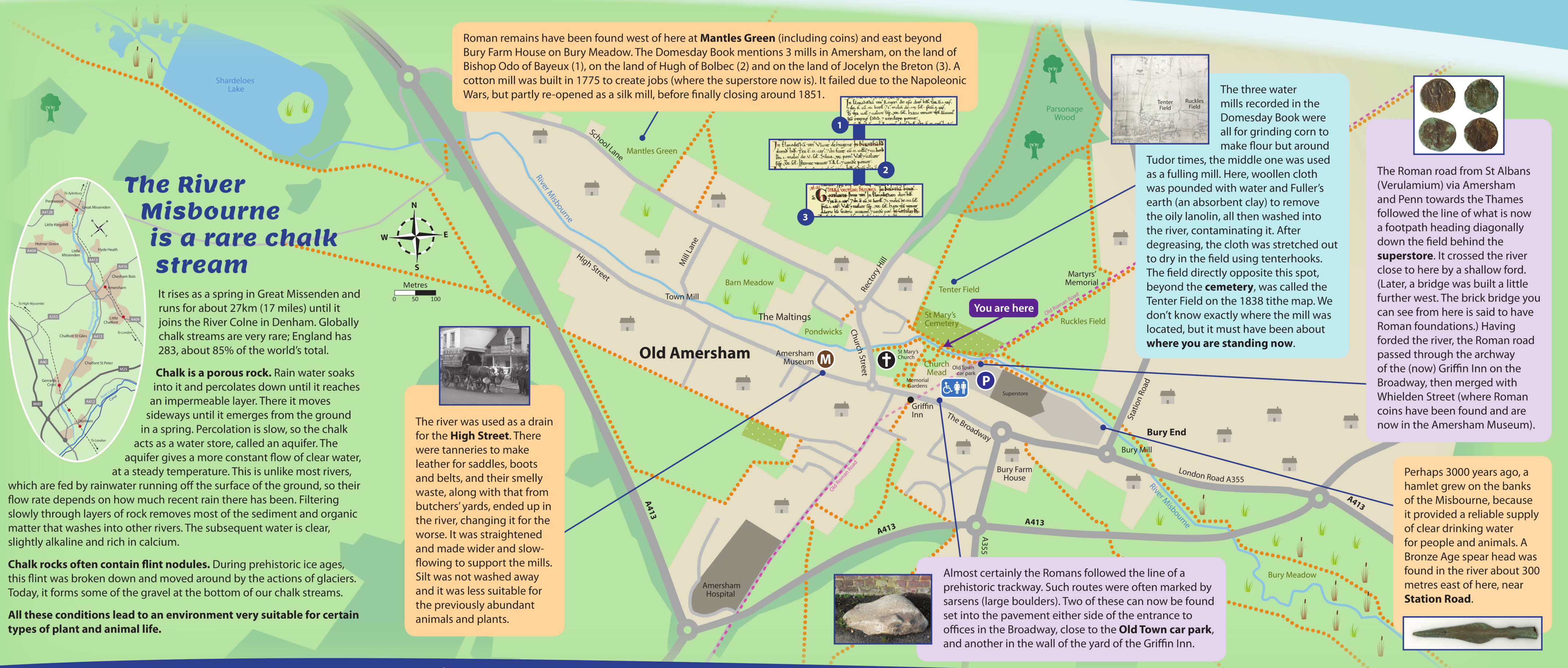




The Amersham  
Society  
welcomes you to

# The River Misbourne at Church Mead



**Watch out for dragons, damsels and kings! Discover the plants and animals you might see along the River Misbourne**



Kingfisher – *Alcedo atthis*  
Watch out for the kingfisher's distinctive flash of blue and listen for their shrill whistle.



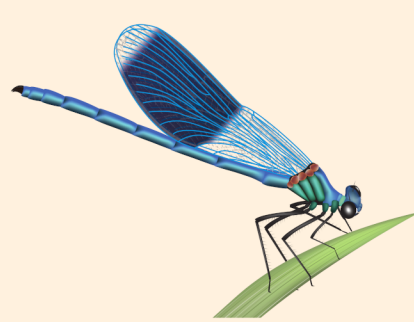
Water mint – *Mentha aquatica*  
The leaves can be used for flavouring cooking and drinks but **please** leave the mint here unpicked for others to enjoy.



Yellow iris – *Iris pseudacorus*  
This iris flowers between May and August and inspired the fleur-de-lys symbol, used in heraldry and by the Scouts.



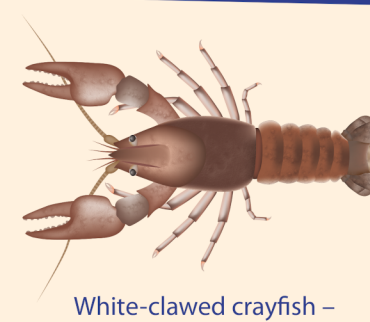
Pendulous sedge – *Carex pendula*  
This plant has drooping, catkin-like spikes typically from May to June and fruits from June to July.



Banded demoiselle – *Calopteryx splendens*  
Males are metallic blue, with a distinctive dark band across their wings, females are shiny green.



Gypsywort – *Lycopus europaeus*  
Also known as bugleweed and water horehound, this plant has a square stem with clusters of flowers that sit round each node.



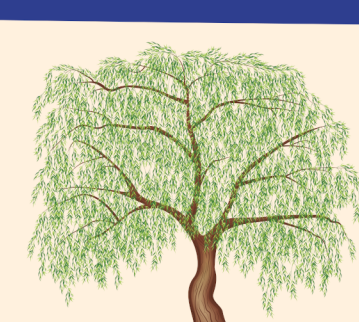
White-clawed crayfish – *Austropotamobius pallipes*  
The UK's only native freshwater crayfish, but you are more likely to see the invasive North American signal crayfish here.



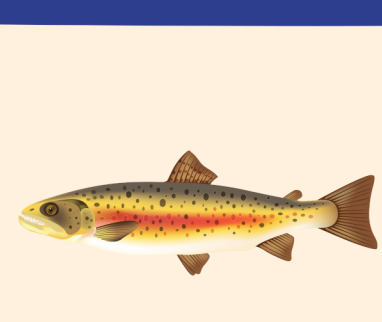
Wild angelica – *Angelica sylvestris*  
A member of the carrot family, it smells like the garden variety, used to make cake decorations.



European bullhead – *Cottus gobio*  
This small fish prefers fast-flowing shallow streams with a stony base. River restoration by Affinity Water in 2023 has improved the habitat.



Weeping willow – *Salix babylonica*  
Native to China, the weeping willow was first introduced to England in the 18th century.



Brown trout – *Salmo trutta*  
Brown trout range from 1 to 15kg. You may spot small ones in the pool where Mill Lane crosses the river.

The Amersham Society hopes you enjoy learning about the River Misbourne and help to preserve this rare chalk stream.

With thanks to Dulcie Denison Will Trust; Brian Withington, in memoriam, Sydna Carol Prince; Graham Cook; Amersham Town Council; Amersham Museum.

This sign is copyright of The Amersham Society 2024. Design and illustrations by Helen Walsh@lonelycottage.co.uk. Maps based on Open Street Maps. Domesday extracts: Prof. John Palmer & George Slater/opensdomesday.org (CC-BY-SA). Tenter Field extract: The National Archives, ref. IR77/6. Roman Coins and Ox Cart: Amersham Museum. Sarsen stone: Peter Borrows. Bronze Age spearhead: The Portable Antiquities Scheme/The Trustees of the British Museum (CC BY-SA 2.0, via Wikimedia Commons).



[www.amershamsociety.org](http://www.amershamsociety.org)